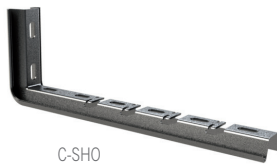
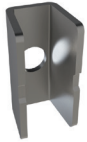


C-SHO



C-SHO



PSHO



	B		e	CTA		GS		GC		e i304		i304		i316		
	mm	inch		mm	kg	lb	REF.	kg/ud	REF.	kg/ud	mm	kg	lb	REF.	kg/ud	REF.
C-SHO 100	100	4"	1,5	98	217	2/7230	0,38	2/7239	0,28	1,5	2/7490	0,29	2/17824	0,29		
C-SHO 150	150	6"	2	90	199	2/7231	0,43	2/7240	0,47	1,5	2/7491	0,34	2/18415	0,34		
C-SHO 200	200	8"	2	69	153	2/7232	0,49	2/7241	0,53	1,5	2/7492	0,40	2/17825	0,40		
C-SHO 300	300	12"	2	45	100	2/7233	0,55	2/7242	0,59	1,5	2/7493	0,50	2/17826	0,50		
PSHO	-	-	2	-	-	2/6240	0,03	2/6318	0,03	2	2/18139	0,03	2/18479	0,03		

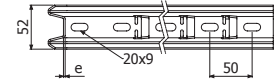
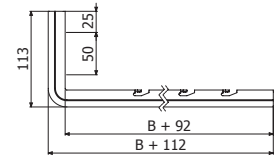
TFSO (2/0894)



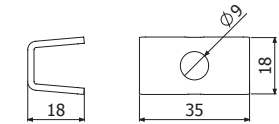
B1 (2/4356-EZ / 2/6826-GC / 2/4925-i304)



TFSO



C-SHO



PSHO



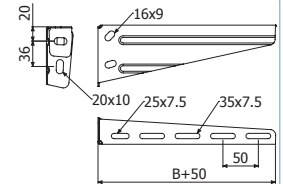
SCR



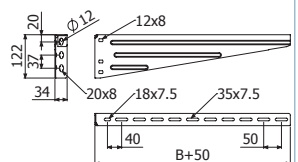
	B		e	CTA		GS		GC		e i304		CTA		i304		i316	
	mm	inch		mm	kg	lb	REF.	kg/ud	REF.	kg/ud	mm	kg	lb	REF.	kg/ud	REF.	kg/ud
SCR 50	50	2"	1,5	70	155	2/0975	0,19	2/3450	0,20	1,5	120	264	2/0994	0,12	2/18433	0,12	
SCR 100	100	4"	1,5	70	155	2/0976	0,24	2/0980	0,27	1,5	120	264	2/0995	0,22	2/17829	0,20	
SCR 150	150	6"	1,5	60	133	2/0977	0,30	2/0981	0,33	1,5	87	191	2/0996	0,27	2/18434	0,27	
SCR 200	200	8"	1,5	60	133	2/0978	0,38	2/0982	0,42	1,5	70	154	2/4691	0,32	2/18435	0,32	
SCR 300	300	12"	2	60	133	2/0997	0,66	2/1002	0,68	1,5	50	110	2/1020	0,42	2/18436	0,42	
SCR 400	400	16"	2	60	133	2/0998	0,83	2/1003	0,85	1,5	42	92	2/1021	0,52	2/18437	0,52	
SCR 500	500	20"	2	60	133	2/0999	0,95	2/1004	1,03	1,5	53	116	2/4464	0,83	2/18438	0,83	
SCR 600	600	24"	2	60	133	2/1000	1,11	2/1005	1,20	1,5	45	99	2/1022	0,97	2/18439	0,97	
SCR 750	750	30"	2	60	133	2/3438	1,50	2/1006	1,81		-	-					

B1 (2/4356-EZ / 2/6826-GC / 2/4925-i304 / 2/18388-i316)

CTBF (2/4362-EZ / 2/7132-GC / 2/4923-i304 / 2/8229-i316)



SCR 50/100/200/300/400



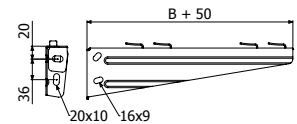
SCR 500/600/750



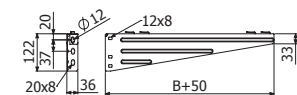
SRB



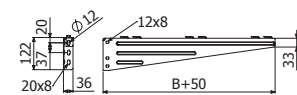
		B		e	CTA		GS		GC	
		mm	inch		mm	kg	lb	REF.	kg/ud	REF.
SRB 100	2	100	4"	1,5	70	155	2/6372	0,25	2/6379	0,27
SRB 150	2	150	6"	1,5	60	133	2/6373	0,26	2/6380	0,29
SRB 200	3	200	8"	1,5	60	133	2/6374	0,38	2/6381	0,42
SRB 300	4	300	12"	2	60	133	2/6375	0,66	2/6382	0,68
SRB 400	4	400	16"	2	60	133	2/6376	0,80	2/6383	0,85
SRB 500	4	500	20"	2	60	133	2/6377	1,01	2/6384	1,09
SRB 600	4	600	24"	2	60	133	2/6378	1,11	2/6385	1,20



SRB 100/150/200/300/400



SRB 500



SRB 600

